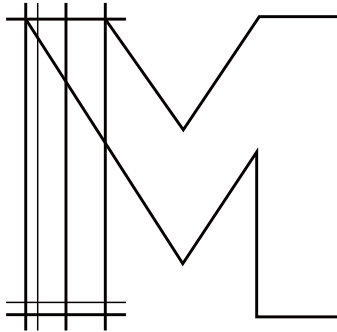


# SIPHON

## Installation Instructions



Merranox Technology (Shanghai) Co., Ltd

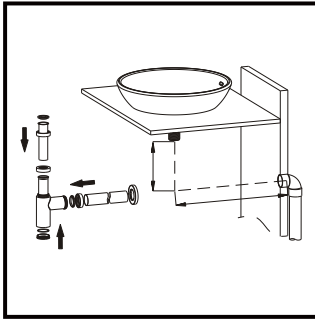
**Address**

Room 118, Building 20, No 1-42,  
Lane 83, Hong Xiang Bei Road,  
Lin Gang Xin District,  
Shanghai, China.

**Email** [info@merranox.com](mailto:info@merranox.com)

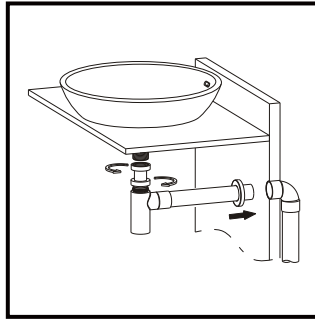
**Website** [www.merranox.com](http://www.merranox.com)

**IMPORTANT:** We recommend consulting a professional if you are unfamiliar with this type of installation.



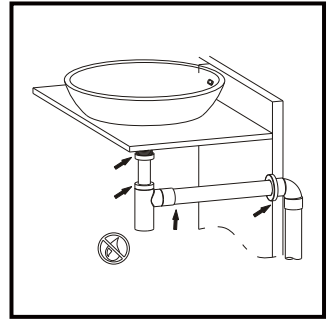
### Step 1

Prepare a tube (not supplied) for protruding through the wall, measure the length where the adaptor needed to finish against the wall. Cut the tube with desired length accordingly and fix the adaptor over the tube. Position basin trap under basin waste, fix it to the basin waste by tightening the locking nut.



### Step 2

By loosening the adjustor nut, we can adjust the height of trap easily. Adjust the height until the back water exit is in position (allow around 5°C fall back to the wall), then tighten the locking nut. Measure the length between basin trap and adaptor where the chrome pipe can fit in between and cut it accordingly. Remove the basin trap from basin waste.



### Step 3

By twisting and pushing the chrome pipe, ensure it is fully fitting into the adaptor. Loosen the back nut and remove the Oring, and place both over the end of chrome pipe. Position the back water exit (basin trap) to the chrome pipe, place the back nut and O-ring into position and tightening it. Fit and tighten the locking nut to the basin waste.

**IMPORTANT:** We recommend consulting a professional if you are unfamiliar with this type of installation.