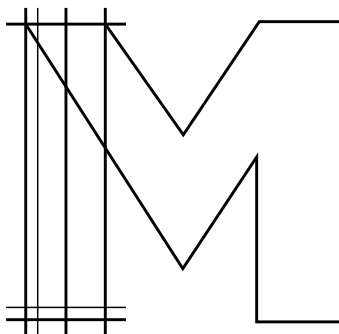


# POP UP DRAIN

## Installation Instructions



Merranox Technology (Shanghai) Co., Ltd

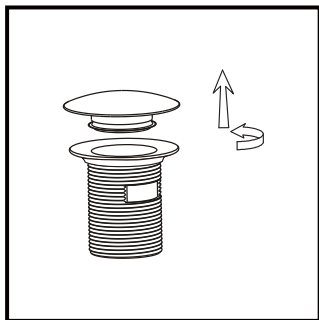
**Address**

Room 118, Building 20, No 1-42,  
Lane 83, Hong Xiang Bei Road,  
Lin Gang Xin District,  
Shanghai, China.

**Email** [info@merranox.com](mailto:info@merranox.com)

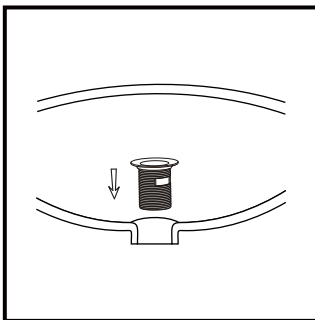
**Website** [www.merranox.com](http://www.merranox.com)

**IMPORTANT:** We recommend consulting a professional if you are unfamiliar with this type of installation.



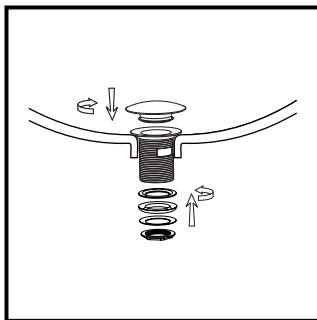
#### Step 1

Remove flange and rubber gasket from drain body. Flange can be unthreading in anti-clockwise direction.



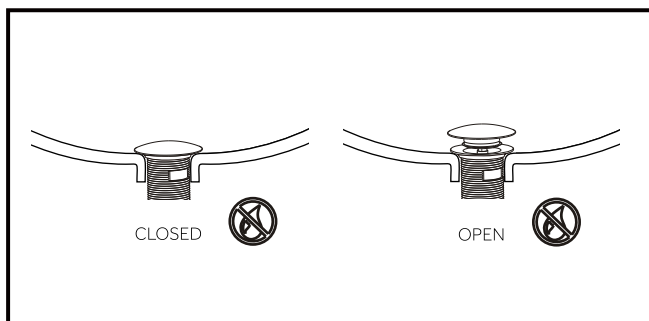
#### Step 2

Place rubber gasket in place over the drain hole in basin, follow by inserting the flange into the drain hole.



#### Step 3

From underneath of basin, reattach the flange to drain body by threading it in clockwise direction.



#### Step 4

Finally, adjust the link and drain lever position to ensure the drain can be fully opened and closed. Run water into the washbasin to ensure drain is functioning well and inspect all the connections for leak.

**IMPORTANT:** We recommend consulting a professional if you are unfamiliar with this type of installation.