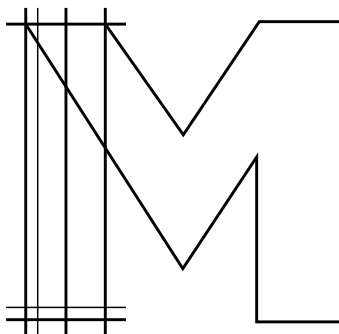


CABINET BASIN

Installation Instructions



Merranox Technology (Shanghai) Co., Ltd

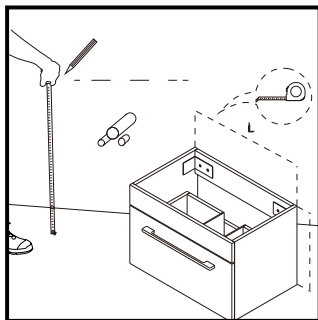
Address

Room 118, Building 20, No 1-42,
Lane 83, Hong Xiang Bei Road,
Lin Gang Xin District,
Shanghai, China.

Email info@merranox.com

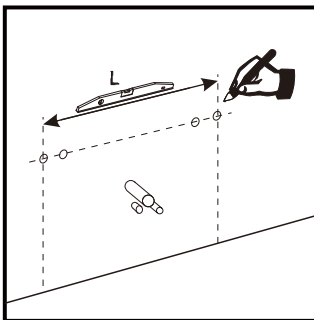
Website www.merranox.com

IMPORTANT: We recommend consulting a professional if you are unfamiliar with this type of installation.



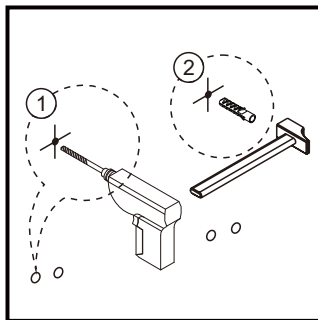
Step 1

Drill the plumbing holes at the back of cabinet by using the appropriate bit size. At desired fixing location, measure the actual height (height of basin + thickness of basin) and length. Mark the position with a pencil.



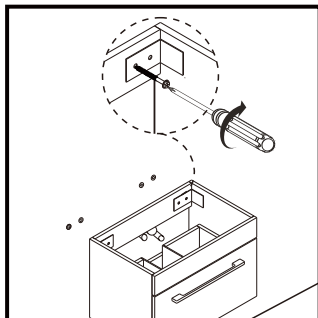
Step 2

Mark the upper fixing locations of cabinet on the wall. Make sure the cabinet is level by using spirit level before marking.



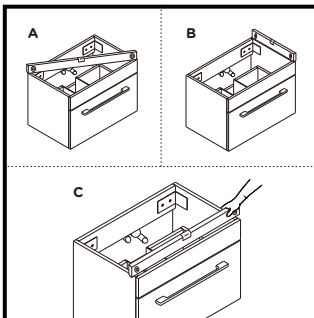
Step 3

By using the corresponding bit size, drill the holes and insert the anchors. If the wall is made of tile, put a tape on marking position to prevent slip during drilling.



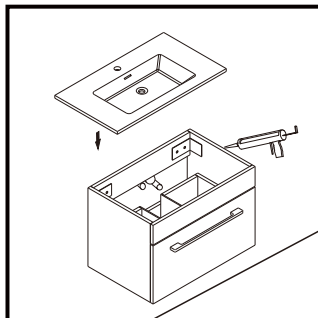
Step 4

By placing the cabinet into position, securely fasten the cabinet to wall through the back.



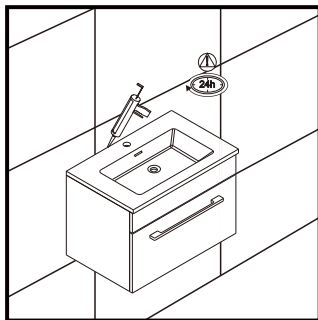
Step 5

Level across the diagonal, sides, front and back. Make sure the cabinet is level in all directions.



Step 6

Apply silicone sealant around the corner of cabinet, and place the top basin in position.



Step 7

To prevent water flowing to the back of basin and damaging the drywall, apply silicone adhesive around the back of washbasin, at the edge where it meets the wall.

IMPORTANT: We recommend consulting a professional if you are unfamiliar with this type of installation.