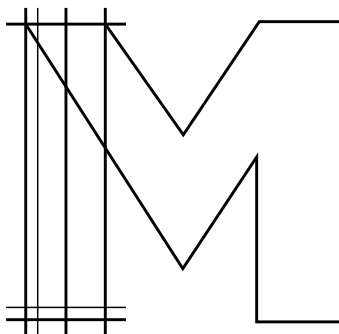


# UNDER COUNTER BASIN

## Installation Instructions



Merranox Technology (Shanghai) Co., Ltd

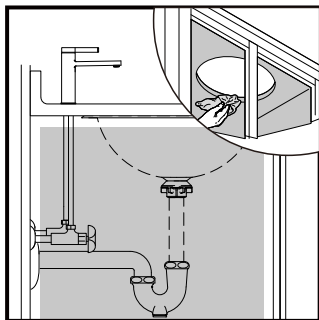
**Address**

Room 118, Building 20, No 1-42,  
Lane 83, Hong Xiang Bei Road,  
Lin Gang Xin District,  
Shanghai, China.

**Email** [info@merranox.com](mailto:info@merranox.com)

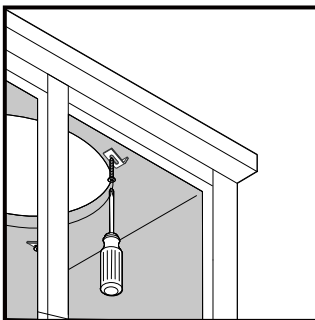
**Website** [www.merranox.com](http://www.merranox.com)

**IMPORTANT:** We recommend consulting a professional if you are unfamiliar with this type of installation.



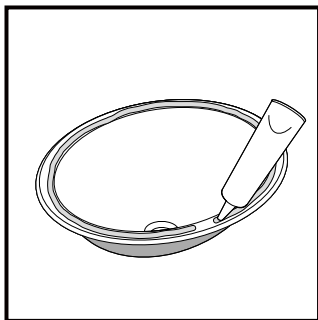
#### Step 1

Place the washbasin on the cut-out countertop to verify proper fit and cabinet clearance.



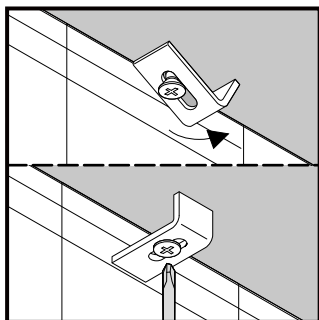
#### Step 2

Make sure the underside of countertop and rim of basin are dry and clean from dirt. Loosely install the mounting clip.



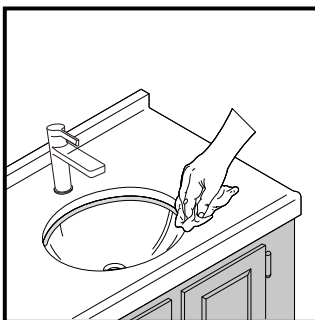
#### Step 3

Apply silicone sealant to the ground rim of basin (Do not use epoxy resin or rigid adhesive as this may cause the basin to crack).



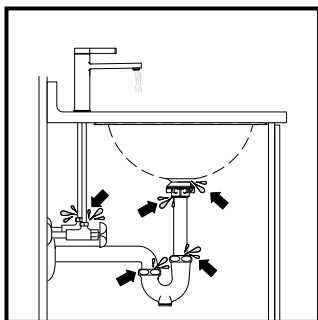
#### Step 4

Hold the basin in place under the opening of countertop, ensure basin is level in all directions, each clip is rotated over the rim. Secure the basin in position by evenly tighten the clips.



#### Step 5

Carefully remove excess silicone sealant immediately. Install the faucet and drain according to respective installation guides.



#### Step 6

Run water into installed basin and inspect all the connections for leak.

**IMPORTANT:** We recommend consulting a professional if you are unfamiliar with this type of installation.